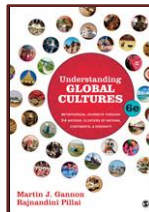


UNIVERSITY OF MINNESOTA

Duluth Campus

*Department of Studies in Justice, Culture, and Social Change
College of Arts, Humanities, and Social Sciences*

228 Cina Hall
1123 University Drive
Duluth, Minnesota 55812-3306
E-mail: troufs@d.umn.edu
ZOOM: <https://umn.zoom.us/my/troufs>
20 November 2022



Direct Links
to Canvas



Available on-line in your  canvas folder at [<http://canvas.umn.edu/>](http://canvas.umn.edu/)

2022 [Canvas Modules](#)
[Module 13](#)



[Tim Roufs](#), Brisbane, Australia, 2017

Global Cultures Week 13

**What's
Happening?**

**Video
Explorations**

Project

(optional)
For Fun Trivia

*****In-the-News**

Slides

**Other
Assignments**

(optional)
Extra Credit

Live Chat
Tuesday 7:00-8:00 p.m.


Readings

Exam

(optional)
Other

**Questions /
Comments**

Discussion

(click links for details)
 = leave page

Items DUE this week:
***enter on-line**
****upload file**
***** if you signed up for this week's news**

What's Happening Week 13?

Thanksgiving (U.S.A.)

UMD Thanksgiving Break, 24-25 November 2022



24 November 2022
U.S.A. Holiday
[Thanksgiving](#)

The big event of the week is, of course, Thanksgiving. In the United States this week we give a great big collective thanks. . . .—

The Thanksgiving Question of the Week:
Are you really what you eat?
[Answer](#)

And after you have celebrated Thanksgiving properly, Presentations are due, as well as the (optional) Extra Credit reports.

Before we take time to celebrate Thanksgiving, we're off to visit the Aymara weaver women in Andean communities of Bolivia. In the award-winning film *Tejiendo Relatos*—"Weaving Stories" we'll hear their stories which are told against a backdrop of high Andean lakes and mountains. And in our Readings we'll visit their neighbors in Brazil and Argentina.

And for dessert this week we'll enjoy some *Sweet Treats around the*

World, offered up by Tim and Kim.

DUE THIS WEEK: Your Presentation (DROPBOX).

DUE: (optional) Extra Credit Reports:

Extra Credit: Film / Lecture / Event Review

Extra Credit: Case Study

Extra Credit: “Event”: The American Swedish Institute and IKEA

As always Live Chat is at 7:00 p.m. on Tuesday, a handy time to ask questions about your Presentation and/or your term Paper and/or whatever. But if that time is not convenient, e-mail. . . .

REM: Your Term Paper is due next week.

IN-THE-NEWS WEEK 13

Be sure to have a look at the news reports of the week . . .

Sign Up in your Course Google Drive Folder:

f2022 external-<https://docs.google.com/document/d/11hUOIyA_1pFSywnkTfBMni1ACH8WUax7sx-g2kkHFE/edit?usp=sharing>

[click ↑ here]

Brazil – Carter S.
Argentina – Vera P.
Ethiopia – Tim P.



Global Cultures News-of-the-Week Summaries

(optional) **LIVE CHAT: OPEN FORUM / OFFICE HOURS . . .**

[Contact Information](#)

Tuesday, 7:00-8:00 p.m. (CDT)

“ZOOM”

[click ↑ here]

or

e-mail anytime: <mailto:troufs@d.umn.edu>

[click ↑ here]



Live Chat is optional.

VIDEO EXPLORATIONS WEEK 13 . . .

Real People . . . Real Places . . .

[Videos for the Semester](#)

▶ ***Tejiendo Relatos -- "Weaving Stories"***

[Aymara; Bolivia]
(56:56 min.)

[on-line access](#)

[click ↑ here]

[Film WebPage](#)

[course viewing guide](#)

**Best Ethnographic Film Award
at the XXVI International Festival of Ethnological Film Belgrade 2017**

**IAMS Award
at the ESPIELLO International Ethnographic Documentary Festival 2017 and the**

*"El vídeo participativo es más que un proceso de realización,
Es una herramienta para cambiar el mundo que nos rodea."*

**["Participatory video is more than a process of realization;
It is a tool to change the world around us".]**

"Tejiendo Relatos is a documentary that reflects the role of weaving women in the Andean communities of Bolivia. The purpose of this work is to make the world of these women known, expressed through ancestral textile techniques."

"... The objective of this project is to publicize their work, in order to revalue an art that unfortunately is on the way to extinction." – verkami.com



WEEK 13 SLIDES . . .

[Class Slides for the Semester](#)

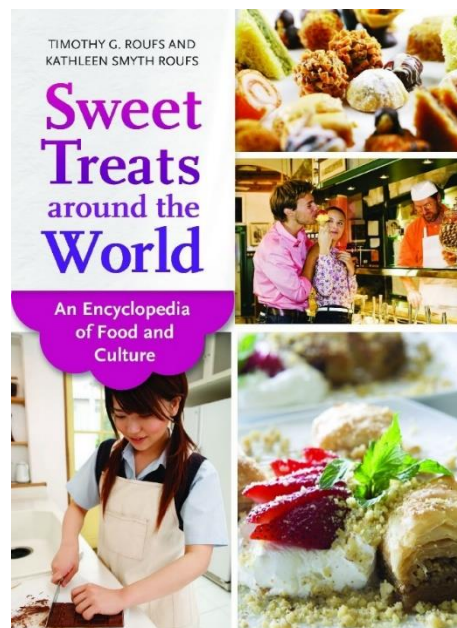
Methodological Perspectives of “Sweet Treats around the World”

[\(.pptx\)](#)

[click ↑ here]

Methodological Perspectives of *Sweet Treats around the World*

[\(.pptx\)](#)



READINGS FOR WEEK 13 . . .

[Readings for the Semester](#)

[Textbook](#)

Latin American

Brazil

and/or

Argentina



PART XII: SAME METAPHOR, DIFFERENT MEANINGS

Chapter 34: The Spanish Bullfight (Review)

Chapter 34: The Spanish Bullfight (Review)

Pick at least one of the Modern-day Latin American cultures with a musical metaphor . . .

PART IV: OTHER EGALITARIAN CULTURES

Chapter 36: The Brazilian Samba

Chapter 37: The Argentine Tango

(assigned readings are in **bold** letters)

Work on Readings for Your Term Paper
(which is due next week)

OTHER ASSIGNMENT INFORMATION . . .

[Main Due Dates](#)

f2022 [Module 13 – Week 13](#)

FINAL EXAM . . .

[General Final Exam Information](#)

And at least start thinking about the Final Exam.

PROJECT INFORMATION . . .

[Basic Information](#)

[Main Due Dates](#)

DUE: Your Presentation

This week we get on with the crown jewel of the semester, your Presentations.

As I have been mentioning throughout the semester a major part of this course is your **research project**—not just for the points, but because researching a topic you are interested in, and presenting your findings to others, and then writing the results up as a formal paper, is one of the best ways to learn things, *and* it gives you valuable practice for presenting your ideas and arguments.

Keep in mind what I said earlier on about your ***Presentations***, viz., that they are intended to be a report on *work in progress*, that is, basically, a rough draft of your ideas that should eventually make their way into your final Term Paper.

Generally it is a good idea to pretty much finish at least a draft your paper before you do too much work on your presentation (your presentation is basically a preliminary report on your work-in-progress paper).

The Class Presentation WebPage with basic information, if you would like to review, is at

<<http://www.d.umn.edu/cla/faculty/troufs/anth1095/fspresentations.html#title>>

[click ↑ here]

†2022 Due GC Wk 13: [Presentations DROPBOX](#)

[click ↑ here]



Demosthenes Practising Oratory(1870)
Jean-Jules-Antoine Lecomte du Nouÿ(1842–1923)
[Wikipedia](#)

REM: **Your Term Paper is due next week . . .**

Details are at . . .

<https://www.d.umn.edu/cla/faculty/troufs/anth1095/fsterm_paper.html#title>[↗](#)

TERM PAPER DROPBOX:

f2022 <<https://canvas.umn.edu/courses/323570/assignments/2497958>>[↗](#)

[click [↑](#) here]



Charles Dickens (1842)
Francis Alexander (1800-1880)
[Wikipedia](#)

DUE: DISCUSSION WEEK 13 . . .

(optional) [Online Discussions Information, Rubric, and Sample Posts](#)

**Once again, no Canvas Discussion this Week.
Focus on finishing your Presentation.**

(optional) **FOR FUN TRIVIA FOR THE WEEK**

Are you really what you eat?



[Answer](#)

DUE: (optional) **EXTRA CREDIT . . .**

[Basic Extra Credit Information](#)

DUE: (optional) **Extra Credit Reports**

You may submit a maximum of two extra credit activities,
one [Review](#) and one [Case Study](#)

**Extra credit will not be accepted later than
the end of Week 13, Saturday, 26 November 2022.**

(A) Extra Credit Review: Lecture / Film / Event

Information:

http://www.d.umn.edu/cla/faculty/troufs/anthfood/afextracredit_review.html#title

Review DROPBOX:

f2022 Week 13 <<https://canvas.umn.edu/courses/323570/assignments/2497967>>

[click  here]

(B) Extra Credit Case Study

Information:

http://www.d.umn.edu/cla/faculty/troufs/anthfood/afextracredit_cs.html#title

Case Study DROPBOX:

f2022 **Week 13** <<https://canvas.umn.edu/courses/323570/modules/items/7993651>>

[click ↑ here]

(C) Extra Credit The American Swedish Institute and IKEA Twin Cities

Information:

f2022 <<https://canvas.umn.edu/courses/323570/modules/items/7993652>>

ASI/IKEA DROPBOX:

f2022 **Week 13** <<https://canvas.umn.edu/courses/323570/assignments/2497966>>

[click ↑ here]

OTHER (OPTIONAL) . . .

(optional) The Textbook will be used s2023 in ANTH 1080 Global Cultures and in ANTH 3536 Anthropology of Europe

QUESTIONS? / COMMENTS . . .

If you have any **questions or comments** right now, please do not hesitate to post them on the  canvas “Discussions”, or e-mail troufs@d.umn.edu, or ZOOM <https://umn.zoom.us/my/troufs>. (E-mail is fastest, and most generally best as quite often URLs need be sent.)

Best Wishes,

Tim Roufs

<<http://www.d.umn.edu/~troufs/>>

<<https://umn.zoom.us/my/troufs>>

<[other contact information](#)>